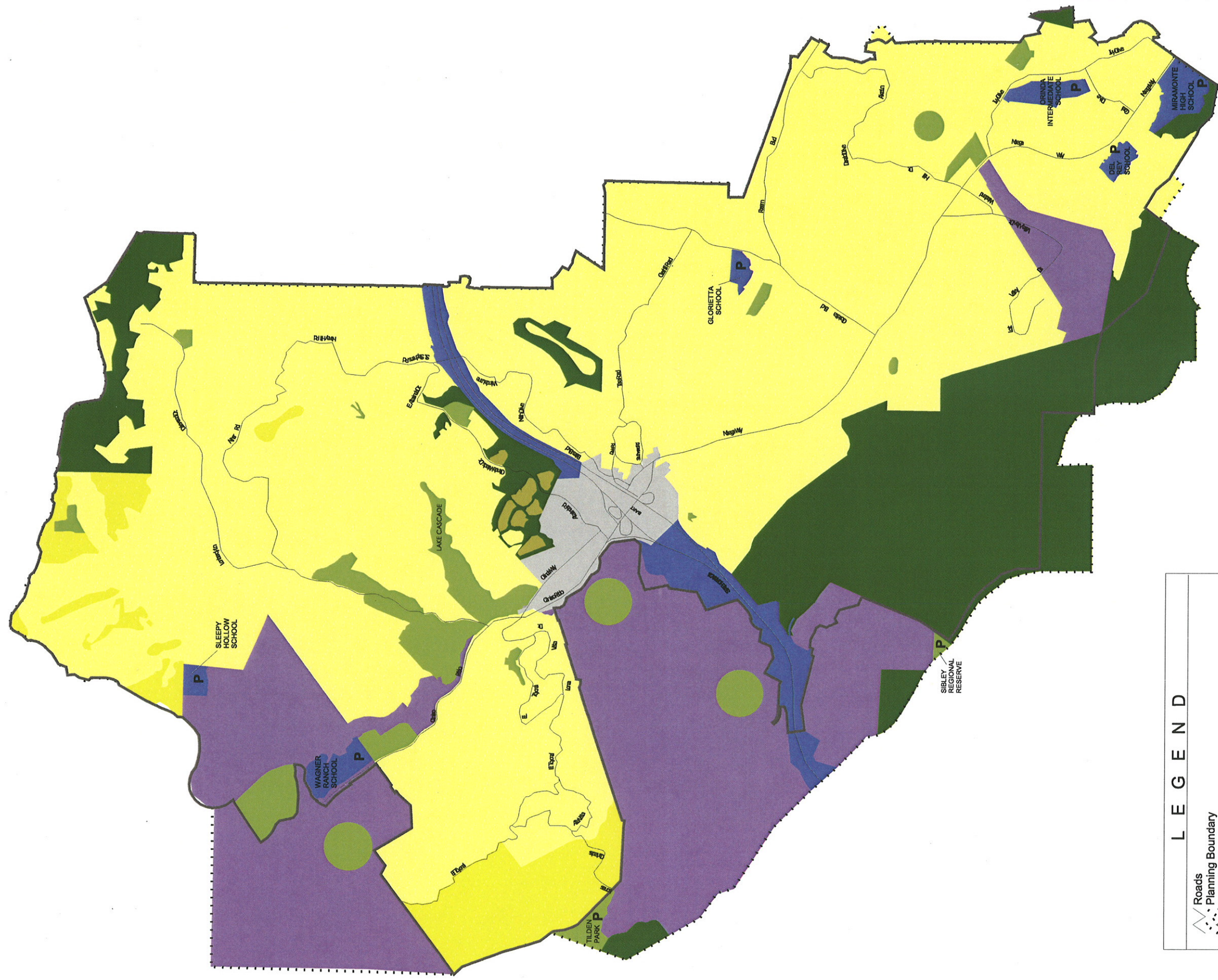


T H E G E N E R A L P L A N : 1 9 8 7 - 2 0 0 7



LEGEND

- Roads
- Planning Boundary
- City Limits
- Residential: Multi-Family (6-10 units per acre)
- Residential: Single Family Very Low Density (5-10 units per acre)
- Residential: Single Family Low Density (1-2 units per acre)
- Business and Professional Offices
- Downtown See Inset
- Utility (P denotes public use)
- Public and Semipublic
- Parks and Recreation (P denotes public use)
- Open Space: Preservation of Natural Resources,
- Managed Production of Resources, Public Health and Safety
- Gateway Valley Planning Area



AUGUST 2005